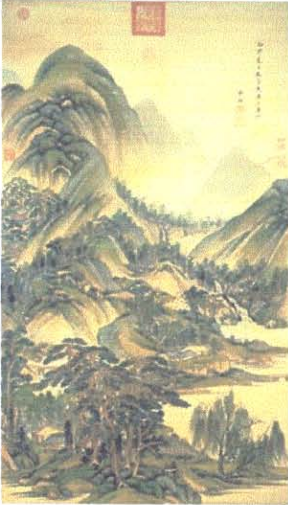


Taiwan, but Japan has controlled archipelago since defeating China in an 1895 war. China says its claims go back centuries.

The Splendors of Imperial China:



I think it's special because it shows the landscape at the time, and some of the palaces. It was traveled though many places because of destruction of most of the places where it was. It was stored at a sugar warehouse for some of the time before it was put on display again.

Why Boycott China:

I think maybe we SHOULD boycott products made in China. The Chinese are exploiting their own workers while making jobs, and treating better those who work for China, but don't live there. In 2001, the State Department in its annual report on Human Rights confirmed that despite years of deepening American economic engagement with China, the human rights situation there had worsened significantly, with "intensified crackdowns" on religious organizations, political dissenters and "any person or group perceived to threaten the government." The report also stated that the situation in Tibet had worsened. Such growingly negative accounts of China's human rights record have become a regular feature for the last few years in the annual State Department report.