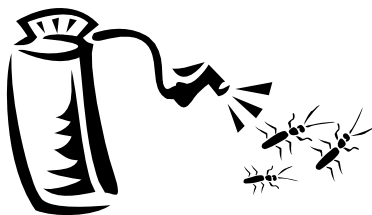


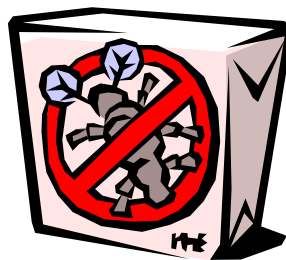
Pesticide Tips:

You can keep your lawn and garden green and at the same time solve the pollution problem by taking these easy steps...

- More is not better. Use pesticides sparingly. “Spot” apply, rather than “blanket” apply.
- Read labels! Use only as directed.
- Never dispose of lawn or garden chemicals in storm drains. This is illegal dumping.
- So visit the DEQ website at <http://www.deq.state.mi.us/documents/deq-whm-stsw-recyclingcontacts.pdf> to locate a recycling center near you.
- Use non-toxic products for your garden and lawn, whenever possible.



- When watering your lawn, use the least amount of water possible so it doesn't run into the street and carry pesticide chemicals with it.
- Don't use pesticides before a rain storm. You will not only lose the pesticides, you will also be harming the environment.
- Store pesticides in leak-proof, water-proof, and sealed containers.



Stormwater Pollution Prevention

Public Safety
&
Environmental Health
EHS Office
313.593.4914

Storm Drains are for Rain...

Each month during the spring and summer, lawns and gardens throughout Wayne County are sprayed with pesticides.

Overwatering or excessive rainfall causes pesticides on leaves and grass to flow into the storm drain and to the Rouge River, untreated.

Use pesticides wisely, not before a rain, and water carefully.

...not pesticides.

